

## Dreamweaver, continued

**Objectives:** Apply advanced functionality of Dreamweaver

- **Rollover effects for buttons**
- **Adding Hot links to Image Map**

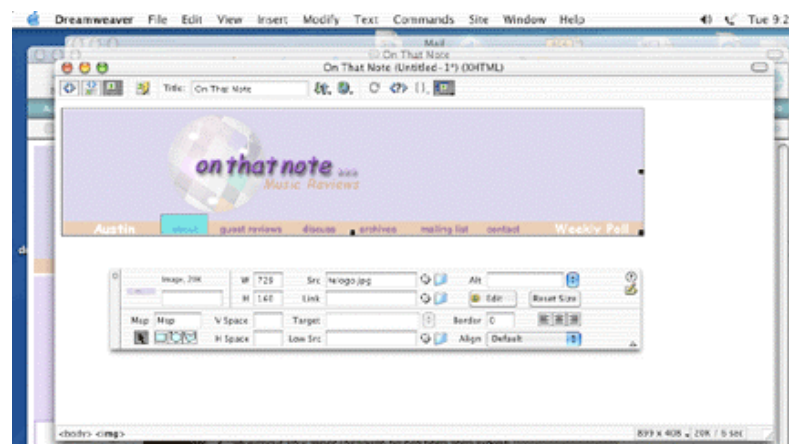
Dreamweaver makes adding a rollover effect easy. You must have all the different states of your rollover prepared in advance (2 versions of each button). You can prepare your images in Photoshop, Illustrator or some other graphics creation program. Make sure you size them consistently and save for Web. Use the single psd technique for making all button states.

**Add rollover button** – Choose Insert, Image Objects, Rollover Image. Give it a meaningful name (this is not what will show up on button, just for identification in html code). Browse for original image, choose. Browse for rollover image, choose. For URL, type in reviews.html or browse for it. Make sure you use .gif or .jpg files for the images and .html files for the URL.

You can put the rollovers in the proper div (nav) and can put them in a list to utilize the list styles in the css for placement.

**Image Map** - Click on Image that you want to add hotspots. Look at Properties panel.

**Add hotlinks to image map** –In the bottom left corner of the Inspector, you will see the Map tools. Find square hotlink tool. Use this to draw a box around the area of the hotspot. In the Link box type find the filename (removing the #). Continue this for each word you wish to link.



Save File, Test in Browser. Look at Source Code in Browser. Do you understand all the tags?